

Company Profile

ICS Global Fabrication Service Co.,Ltd.



Companies in the Group

1. IT and Construction Solution Co.,Ltd.
2. **ICS Global Fabrication Service Co.,Ltd.**
3. **ICS Smart Designs and Products Co.,Ltd.**

Main involvement

Engineering, Drafting design, Shop detailing & Project control.
Fabrication & Construction.
Modular building, solar energy system, etc; design & Trading.

Main Topics

1. Company's Background and Contact Details
2. Company's Services and Capability
3. Company's Certificate and Software Licenses
4. Company's Job References
5. Layout of the fabrication facility
6. Company's Organization Chart
7. Company's manpower loading summary
8. Company's equipment & tools loading summary
9. Annual Turn Over
10. ICS's Partners and Customers

1. Company's Background and Contact Detail

1.1 ICS Global Fabrication Services Co.,Ltd. (ICSGFS) commenced business as a piping and structural steel fabrication company in 2013 with capital registration 5 million THB which the head office is based in Rayong city Thailand, and the fabrication shop is located in Mapkha where 25km away from the head office and 40km from the commercial sea ports.

The professional management team have over 20 years of diversified experience in the fields of fabrication, construction and demonstrate successful integration within project teams to ensure the most efficient results.

Total area for the fabrication facility is approximately 120,000sqm which consist of :

- Under cover fabrication shops = 6 shops for total more than 10,000sqm.
- Under cover blasting and painting area = 1,800sqm.
- Pre-assembly area = 5,000sqm.
- Raw material lay down area = more than 7,500sqm.
- Finish products and Packing area = 10,000sqm.
- Spare area = 40,000sqm

Heavy Material handling Equipment :

- 3 off 20t overhead cranes, 8 off 15t overhead cranes and 2 off 10t overhead crane.
- 1 off 12m trailer.
- 1 off 8t hiab crane.
- 1 off 5t folklift and 1 off 3t folklift, etc;

1. Company's Background and Contact Detail

1.2 IT and Construction Solution Co.,Ltd. (ICS) commenced business in 2004 with capital registration 1 million THB, the company is servicing in the mining, oil and gas, infrastructure and commercial building industries, with participation in some of the world's most high profile projects.

ICS is committed and able to provide the highest level of quality shop detail drawing for structural steel and piping to it's clients by having a world-class support team who is committed to ensuring client satisfaction and specializes in helping clients with successful cooperation, to minimize all unnecessary error in the drawing which may will causing a lot of extra work at the construction site.

ICS is committed to use the most suitable licensed software, the company has 14 Tekla Structures licenses, 4 Auto-cad licenses and 2 Bentley Autoplant licenses.

1.3 ICS Smart Design and Products Co.,Ltd. (ICSSDP) was registered in 2014 with capital registration 1 million THB, the company is mainly focusing on design and build the products with clean energy and environment saving in the future such as solar and wind energy, LNG, co-generators, ORC (Organic Rankine Cycle), etc; and also collecting experience from the construction field to develop the tools, component or material to be able to shorten the construction duration with higher quality.

Web Site : www.icsth.com (Under developing) Facebook : <https://www.facebook.com/ICSGFS>

Mailing address : 4/7-8 Nong Bua Road, T.Chengnern, A.Mueng Rayong Thailand 21000

Contact Details :

- Mr.Wichai Sumetvarapa (Managing Director) e-mail : wichai@icsth.com Phone No : +66 961424195
- Mr.Seksan Pothirat (General Manager) e-mail : seksan@icsth.com Phone No : +66 850624664

2. Company's Services and Capability

- Services :
 - Minor engineering design such as lifting design, pipe support design and stress analysis, joint connection design for steel work, etc;
 - 3D modeling by licensed software for drafting design and shop detailing for structural steel, piping, plate work, etc;
 - Fabrication and construction for piping, steel structure, plate work, etc; which including all required pre-assembly work in the work shops.
 - Grit Blasting and Painting.
 - Packing work with nesting system (for oversea project).
 - Site installation and commissioning.
 - Design and manufacturing of precast concrete panels.
 - Design and Supply industrial tanks and re-gasification skids such as LNG, LPG, H₂, O₂, etc;

2. Company's Services and Capability

- Capability :
 - Shop detailing drawings :
 - Structural steel => 500t/month (based on normal structure such as ware house, piperack, etc;)
 - Piping Isometric and Spool drawings => 1,500 sheet of drawings/month by using Spoolgen based on the provided idf or pcf files.
 - Plate work => 200t/month depending of the size and thickness of the plate work.
 - Fabrication :
 - Structural steel => 600t/month
 - Piping work => 50,000 DBI/month (based on the normal carbon steel).
 - Plate work => 150t/month depending of the size and thickness of the plate work.
 - Blasting and Painting :
 - Grit Blasting and Painting => 15,000sqm/month

3. Company's certificates and software licenses

- Certificates :
 - 1. ASME "U" and "R" Stamp.

- Software licenses :
 - 1. Tekla xsteel for structural steel & plate work = 14 permanence licenses.
 - 2. Spollgen for piping work = Rental license.
 - 3. Auto cad = 4 permanence licenses.
 - 4. Bentley Autoplant = 2 permanence licenses.

4. Company's Job References

- PTT Polyols Project (SMP Work)
 - +240,000DBI Piping Work -> Shop detailing by Spoolgen, Fabrication, Blast & Paint & Erection
 - Erection +500 items of small, medium and heavy equipment for total +1,800 tons
 - Erection +1,850 tons structural steel members supplied by other.



4. Company's Job References

- PTT Midline Compressor Project (2,000 tons Structural Steel -> shop detailing, fabrication & erection)



4. Company's Job References

- Thai Oil Jetty Project (1,000 tons Structural Steel -> shop detailing, fabrication & Blasting/Painting)



4. Company's Job References

ICS Group

- Erection at Kao Hin Sorn Prajeenburi



4. Company's Job References

- ICSGFS Fabrication Facility

The fabrication facility is being built and expanded which including design, procurement, fabrication and construction.



4. Company's Job References

- PTT Pipeline Korach Project

There are total more than 2,000 tons of steel trench boxes were fabricated.



4. Company's Job References

- PTT Midline 4th Transition Tie-in Project

There are more than 2,000 DBI of 42" pipe were fabricated, painted and installed.



4. Company's Job References

- Modular Building Project - Fabricate, transport and installation for the modular building eg : Site office, swimming pool, public toilet, etc; designed by **ICSSDP**



4. Company's Job References

- ALCAN G3 Expansion Project from 2005 to 2007, ICS has done 20,000t structural steel shop detail drawings and generated 10,000 Isometric drawings, and also provided the project control system to monitor the fabrication & assembly work progress including raw material tracking.



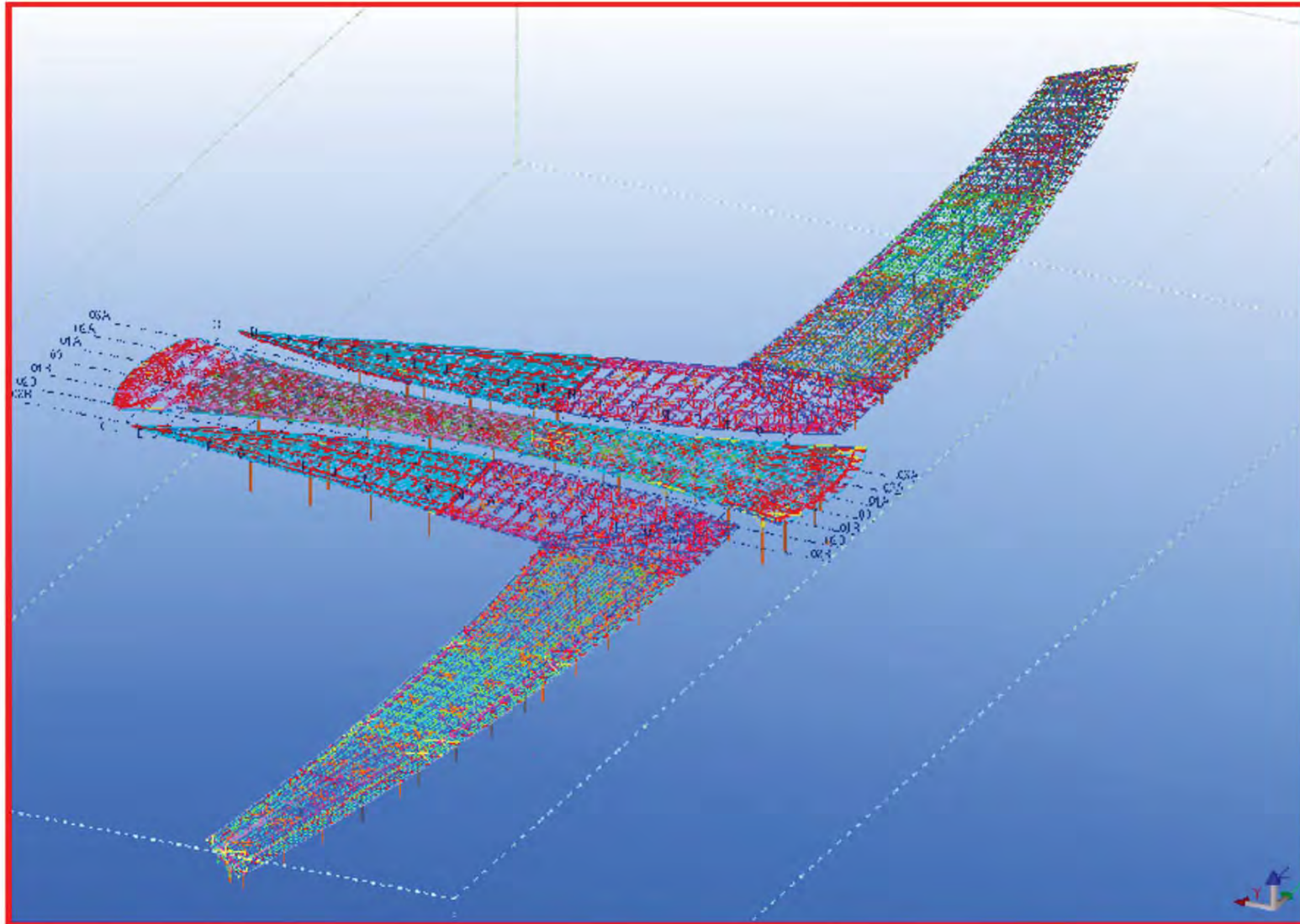
4. Company's Job References

- Egypt EBIC 2000MTPD KAAP Ammonia Plant Project from 2006 to 2007; ICS has generated approx. 3,000 Isometric drawings, and also provided the project control system to monitor the pipe spool fabrication & installation work onsite in Egypt.



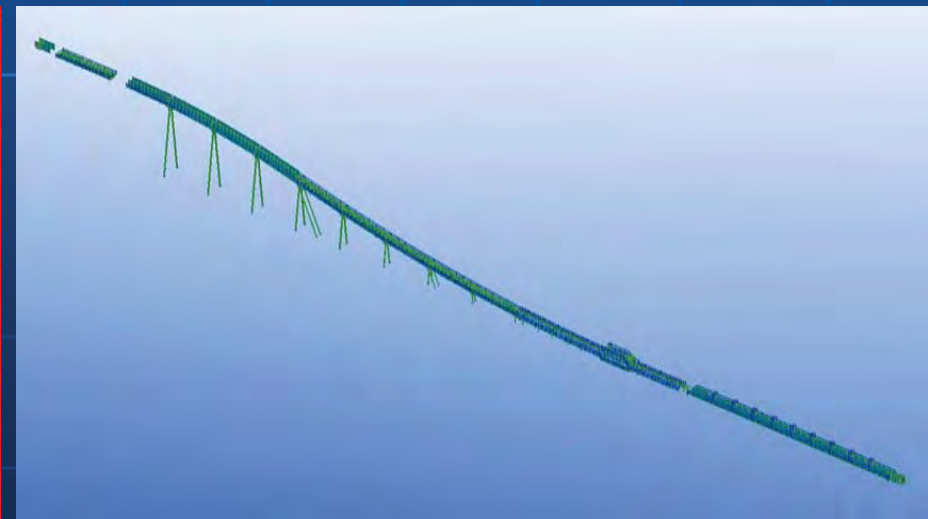
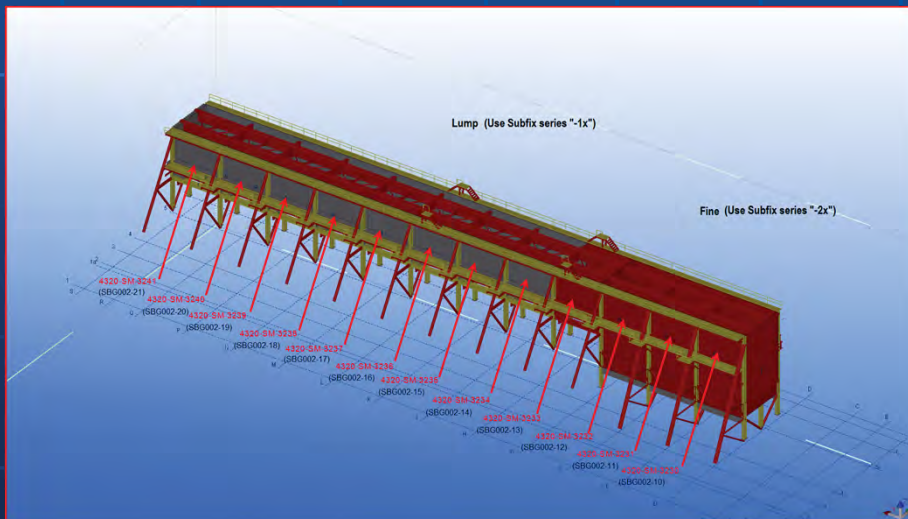
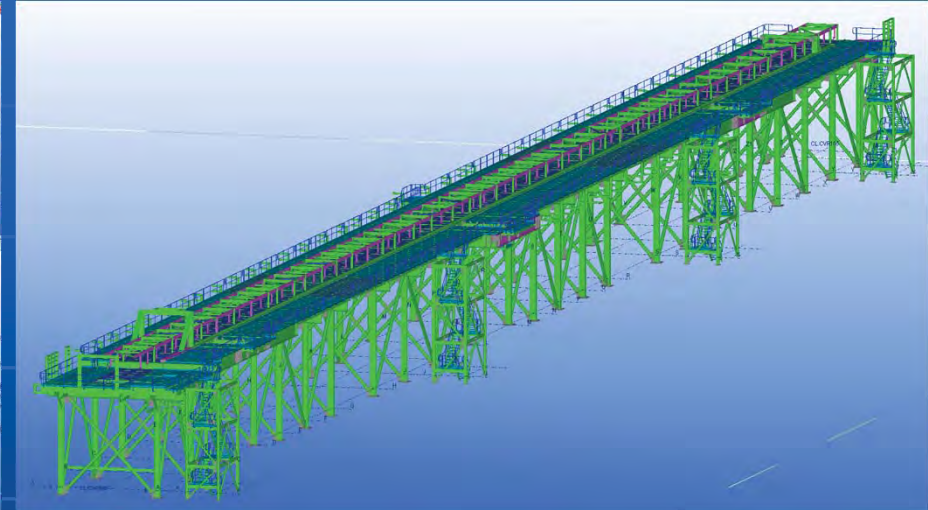
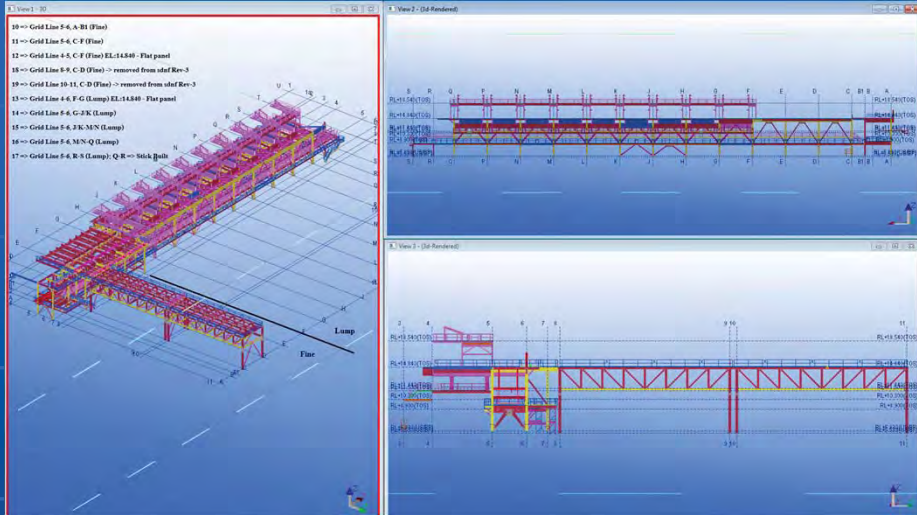
4. Company's Job References

- SNC - Benina International Airport Project from 2010 to 2011; ICS has 85% done 10,000t structural steel 3D model and shop detail drawings including joint connection design, unfortunately the project was cancelled later on after the project was started for 5 months as the civil war in Libya.



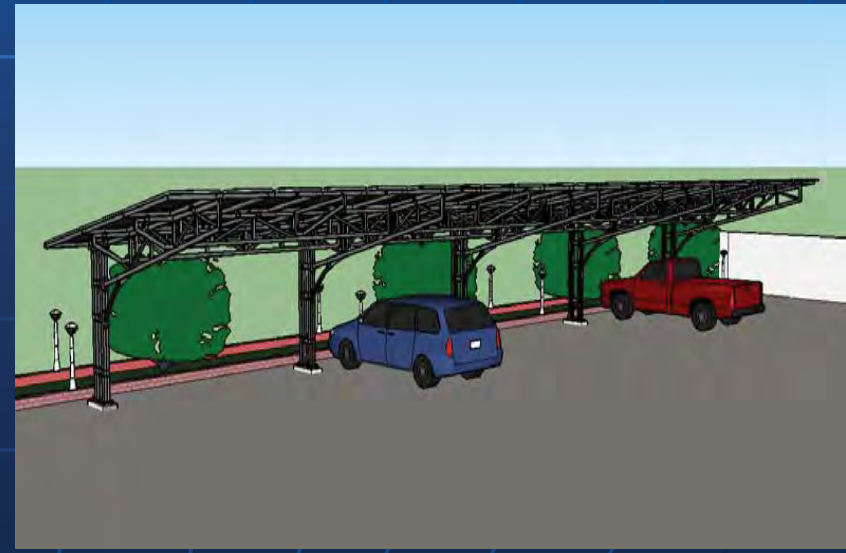
4. Company's Job References

- Roy Hill Project; ICS has done 9,000t structural steel and plate work 3D model and shop detail drawings.



4. Company's Job References

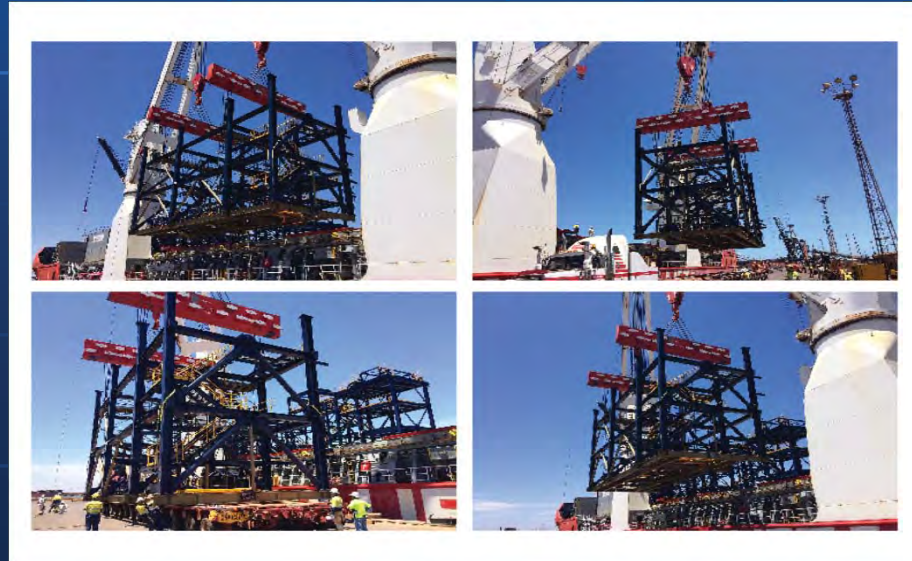
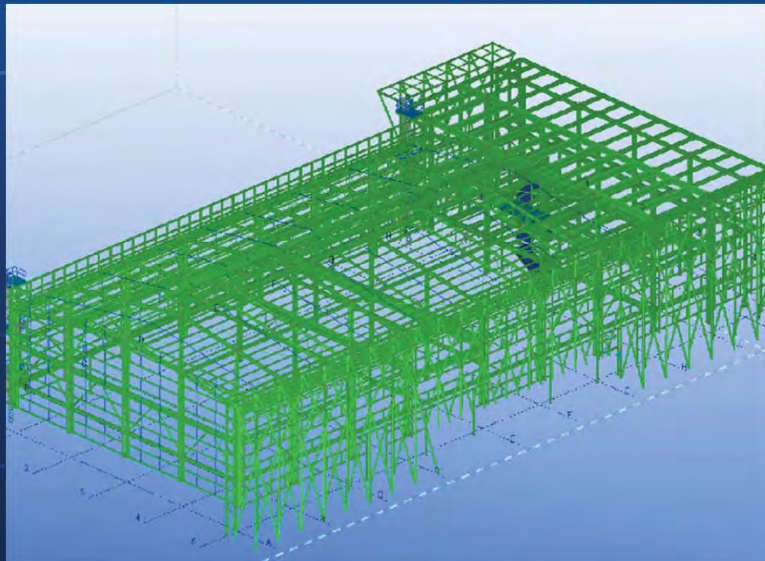
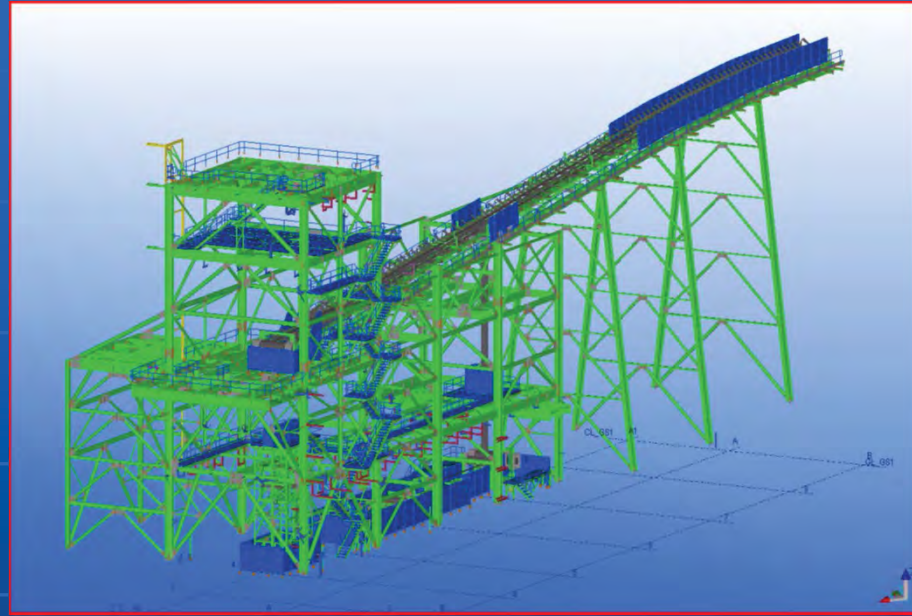
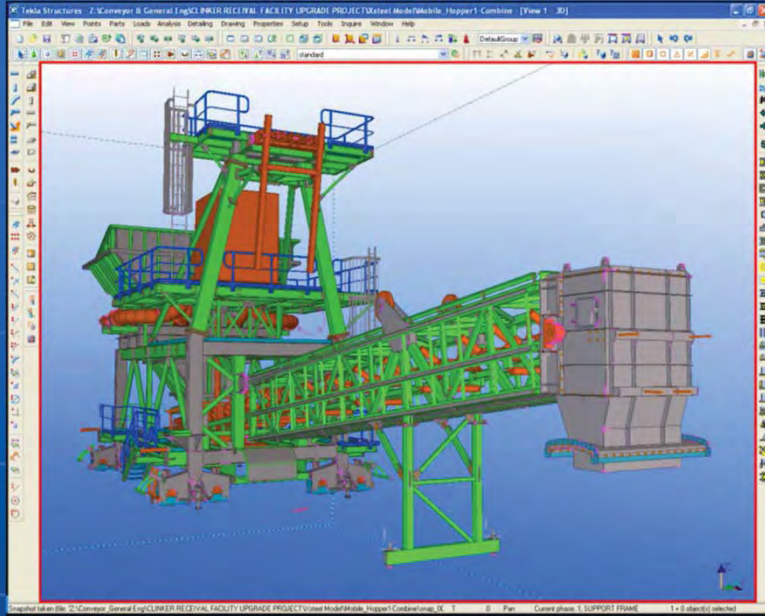
- Solar Roof Car Park Project; **ICSSDP** designed a 8 cars parking shelter with solar panels roof, these solar panels are able to generate up to 20 Kilowatts electricity.



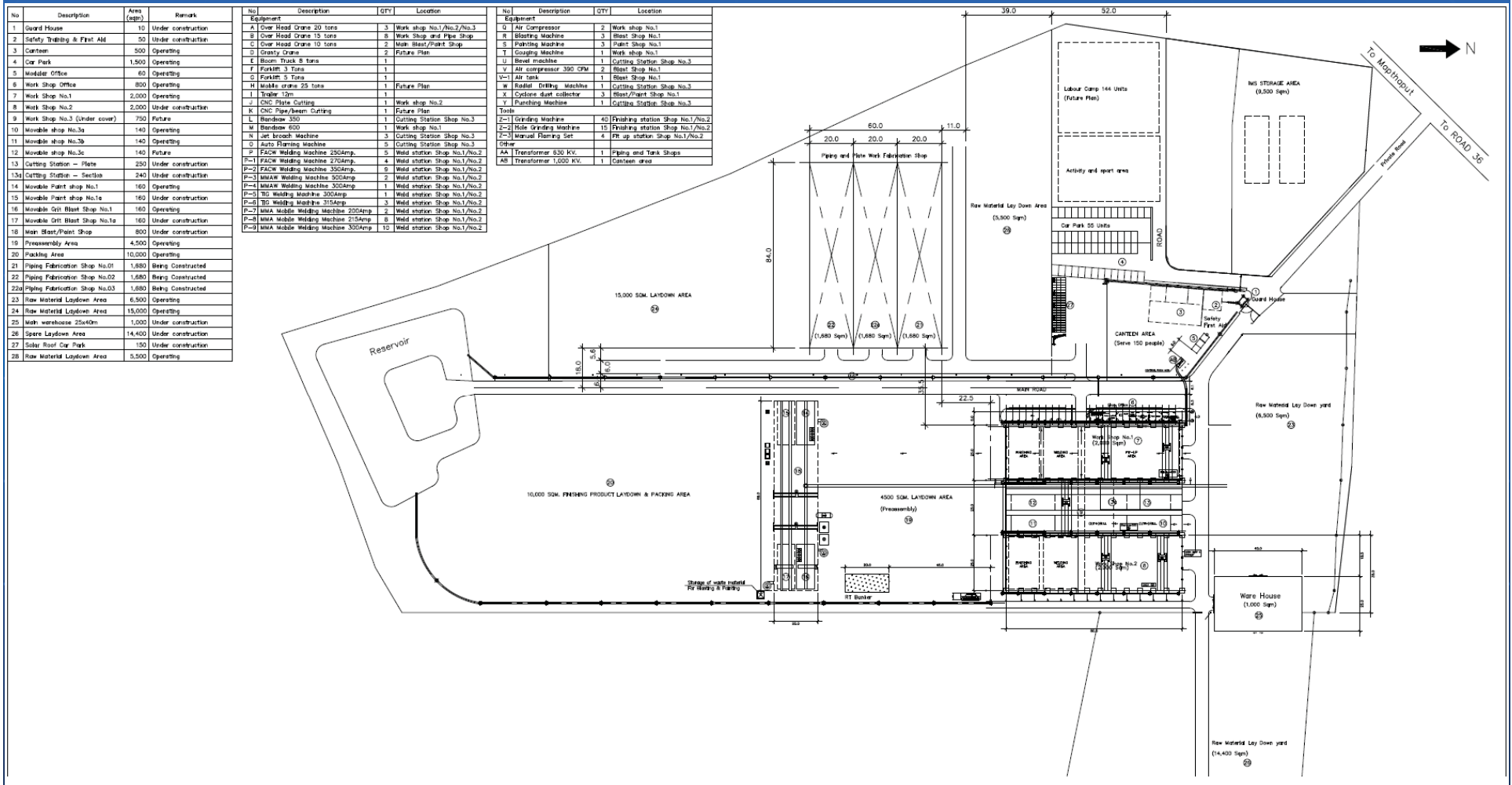
4. Company's Job References

ICS Group

- Other projects.

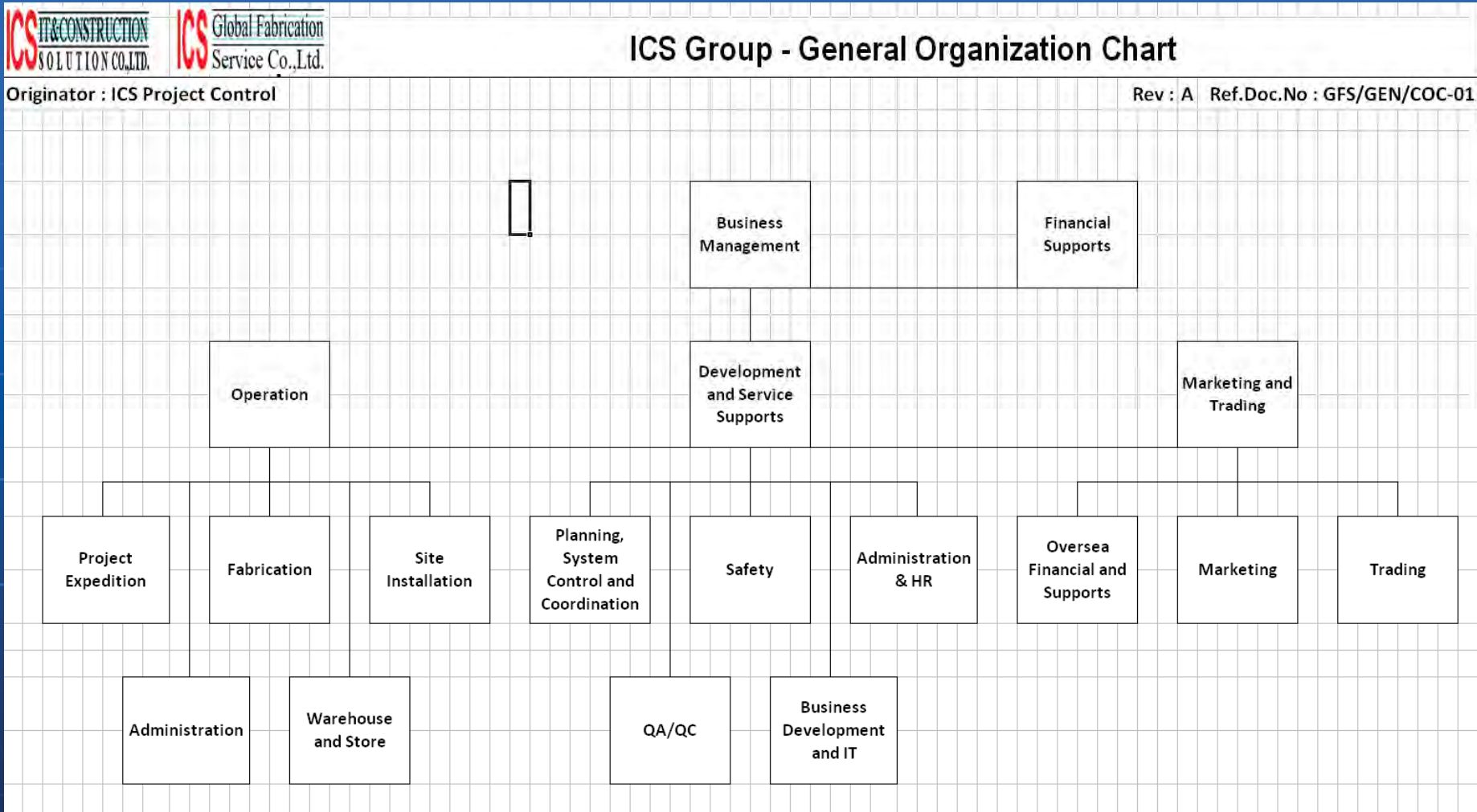


5. Layout of the fabrication facility



Total land Size = 120,000sqm
 30 km from Sattahip sea port and 50 km from
 Thailand biggest sea port LAemchabang

6. Company's Organization Chart



7. Company's manpower loading Summary

ICSGFS Manpower Loading Plan and Actual				Reported : 02-May-21
No	Description	QTY		Note
		Planned	Current	
Supervision (Indirect manpower)				
1	Manager		6	
2	Engineer		5	
3	Supervisor		3	
4	Project Controller		3	
5	QA/QC Inspector		5	
6	Safety Officer		1	
7	Security		2	
		-	25	
Direct Manpower				
1	Foreman		5	
2	Technician		2	
3	Welder		10	
4	Fitter		15	
5	Helper		20	
6	Blaster/Painter		3	
7	Operator		3	
8	Rigger		3	
		-	61	
Summary				
1	Indirect Manpower	-	25	
2	Direct Manpower	-	61	
		-	86	

8. Company's equipment & tools loading Summary

Reported : 02-May-21

No	Description	QTY		Note
		Planned	Current	
Equipment				
1	Over Head Crane 15 tons	9	6	
2	Over Head Crane 20 tons	3	3	
3	Over Head Crane 10 tons	2	2	
4	Granty Crane	2	-	
5	Boom Truck 8 tons	2	1	
6	Forklift 3 Tons	2	1	
7	Forklift 5 Tons	2	2	
8	Mobile crane 25 tons	1	-	
9	Trailer 12m	1	1	
10	CNC Plate Cutting	2	1	
11	CNC Pipe/beam Cutting	1	-	
12	Bandsaw 350	1	1	
13	Bandsaw 600	1	1	
14	Jet broach Machine	5	5	
15	Auto Flaming Machine		5	
16	FACW Welding Machine		26	
17	SMAW Mobile Welding Machine		24	
18	MMAW Welding Machine		3	
19	Argon Welding Machine		4	
20	Air Compressor		4	
21	Blasting Machine		3	
22	Painting Machine		3	
23	Gouging Machine		1	
24	Bevel machine		3	
Tools				
1	Grinding Machine		40	
2	Hole Grinding Machine		15	
3	Manual Flaming Set		4	

9. Annual Turn Over

ICS Group

Year	ICS	ICSGFS	ICSSDP	Sum	Currentcy : Thai Baht Note
2016	7,581,117.87	178,155,081.92	-	185,736,199.79	
2017	6,106,914.61	65,195,600.08	-	71,302,514.69	
2018	2,849,797.79	103,183,550.62	-	106,033,348.41	
2019	1,105,611.64	287,414,840.58	-	288,520,452.22	
2020	4,119,000.14	41,536,278.55	-	45,655,278.69	
	126,422,812.52	839,257,458.24	-	965,680,270.76	

10. ICS's Partners and Customers

